

Instructions to Examiner

The examiner discourse below should be used with each and every test taker to ensure a consistent testing experience for all. The information in **bolded text** is to be read aloud. The information in *italics* explains what you should do.

Examiner to Test Taker — Introduction

REC Start the audio recorder.

▶ **Welcome to the MET Go! Speaking Test. My name is _____, and I'll be giving you the test.**

▶ **What is your name?**

Wait for the answer.

Nice to meet you, _____.

▶ **Your registration number is: _____**

Read registration number aloud.

▶ **Now I will tell you about the speaking test. This test has 4 parts and lasts about 10 minutes.**

▶ **You will see the tasks on the test cards. I'll also read them to you.**

- **In Part 1, we will have a short practice conversation.**

- **In Parts 2 and 3, you will talk about some pictures.**
- **In Part 4, you will talk about yourself.**

▶ **There are no right or wrong answers on this test. Please say as much as you can for each task. I will tell you when your time is up.**

▶ **Before we begin, did you understand the information about the test?**

If the test taker understands, continue to Part 1. If the test taker does not understand, simply repeat the instructions at a slower speaking rate. Do not translate, add information, or paraphrase.

Examiner to Test Taker — Part 1: Warm-up

▶ **Now we are going to start the first part of the test. This is a short practice conversation.**

▶ **I'm going to ask you the questions on the test card. Remember, there are no right or wrong answers.**

Hand out Part 1 test card.

 *Start the stopwatch.*

Ask each question on the test card. Give the test taker time to respond after each question. This should be a relaxed, natural conversation.

▶ **How are you today?**

▶ **What is the weather like today?**

▶ **Do you like this weather?**

▶ **How old are you?**

▶ **When is your birthday?**

▶ **Tell me about your family.**

▶ **Where do you live?**

▶ **Tell me about your home.**

 *After a maximum of 60 seconds have elapsed, say:*

▶ **Thank you.**

Collect Part 1 test card.

Test Taker's Card

Part 1: Warm-up

This is a short practice conversation.

How are you today?

What is the weather like today?

Do you like this weather?

How old are you?

When is your birthday?

Tell me about your family.

Where do you live?

Tell me about your home.

Examiner to Test Taker — Part 2: Picture Comparison

► **Now we are going to start the second part of the test.**

Hand out the Part 2 test card.

Read aloud the instructions printed on the card (see below).

Point to the images on the test taker's card.

► **Look at the two pictures. Many things are the same, but some things are different.**

► **For example, in both pictures, there is a store. But in picture 1, there are two people outside the store, and in picture 2, there are not.**

► **What else is different?**

Say as much as you can. You have 90 seconds.

🕒 *Start the stopwatch.*

NOTE: If the test taker stops speaking and needs additional prompting to fill the allowed time, say:

► **Can you tell me more?**

🕒 *After 90 seconds have elapsed, or if the test taker indicates that their answer is complete, say:*

► **Thank you.**

Collect the Part 2 test card.

Test Taker's Card

Part 2: Picture Comparison

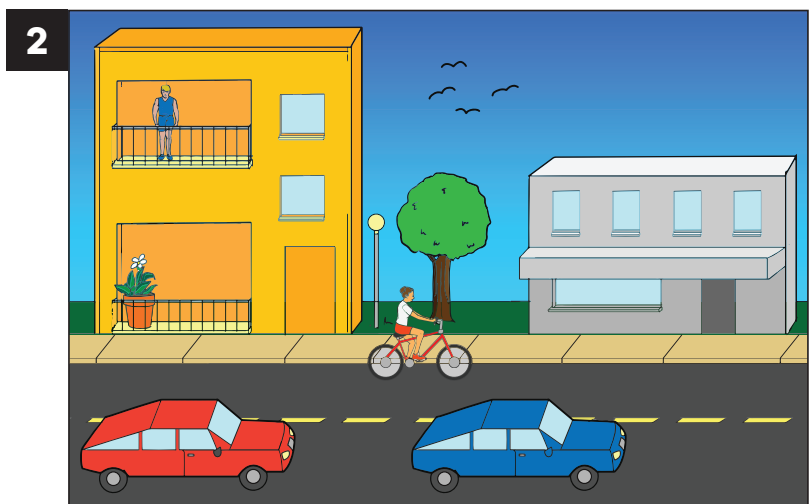
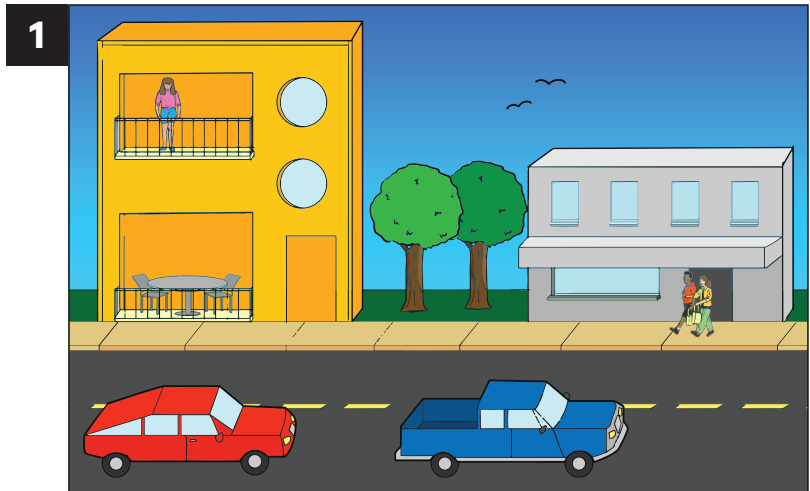
Look at the two pictures. Many things are the same, but some things are different.

For example, in both pictures, there is a store. But in picture 1, there are two people outside the store, and in picture 2, there are not.

What else is different?

Say as much as you can.

You have 90 seconds.



Examiner to Test Taker — Part 3: Picture Description

- **Now we are going to start the third part of the test.**

Hand out the Part 3 test card.

Read aloud the instructions printed on the card (see below) and point to the image on the test taker's card.

- **Tell me what you see in the picture and tell me a story about it.**

- **Say as much as you can. You have 60 seconds.**

🕒 *Start the stopwatch.*

NOTE: If the test taker stops speaking and needs additional prompting to fill the allowed time, say:

- **Can you tell me more? / Can you tell me a story about the picture?**

🕒 *After 60 seconds have elapsed, or if the test taker indicates that their answer is complete, say:*

- **Thank you.**

Collect the Part 3 test card.

Test Taker's Card

Part 3: Picture Description

Tell me **what you see** in the picture and **tell me a story** about it.

Say as much as you can.

You have 60 seconds.



Examiner to Test Taker — Part 4: Personal Experience and Opinion Questions

- ▶ **Now we are going to start the last part of the test. There will be two questions in this part of the test. You will have a short time to plan each of your answers. Then, you will have 60 seconds to talk about each question.**

Hand out Part 4 test card.

Read aloud the instructions for the first question printed on the test card (below).

Question 1

- ▶ **Now let's talk about you. Tell me about a time in the past when you had to clean or wash something in your home. You have 10 seconds to plan your answer.**

⌚ *Start the stopwatch.*

⌚ *After 10 seconds have elapsed, say:*

- ▶ **OK. Now you have 60 seconds to talk. Say as much as you can. Please begin.**

⌚ *Start the stopwatch.*

NOTE: If the test taker stops speaking and needs additional prompting to fill the allowed time, say:

- ▶ **Can you tell me more?**

⌚ *After 60 seconds have elapsed say:*

- ▶ **Thank you, now let's move on the next question.**

Read aloud the instructions for the second question, printed on the test card (below).

Question 2

- ▶ **Let's talk about your opinion. Some people enjoy cleaning and organizing their homes. Other people think cleaning is boring and don't like to do it. How do you feel about cleaning? Give your opinion and reasons to support it. You have 10 seconds to plan your answer.**

⌚ *Start the stopwatch.*

⌚ *After 10 seconds have elapsed, say:*

- ▶ **OK. Now you have 60 seconds to talk. Say as much as you can. Please begin.**

⌚ *Start the stopwatch.*

NOTE: If the test taker stops speaking and needs additional prompting to fill the allowed time, say:

- ▶ **Can you tell me more? / Can you say why?**

⌚ *After 60 seconds have elapsed say:*

- ▶ **This is the end of the MET Go! Speaking Test. Thank you.**

Collect the Part 4 test card.

REC *Stop the audio recorder.*

Test Taker's Card

Part 4: Personal Experience and Opinion Questions

1. Tell me about a time in the past when you had to clean or wash something in your home.

You have 10 seconds to plan your answer. ⌚

Now you have 60 seconds to talk.
Say as much as you can.

Please begin.

2. Some people enjoy cleaning and organizing their homes. Other people think cleaning is boring and don't like to do it. How do you feel about cleaning? Give your opinion and reasons to support it.

You have 10 seconds to plan your answer. ⌚

Now you have 60 seconds to talk.
Say as much as you can.

Please begin.